



Specializing in the sale of large properties across the state of Alabama

Tallapoosa County Cleveland Tract

Size: 2,130 acres(+/-)

Location: Near the communities of Horseshoe Bend and New Site in northeast Tallapoosa County, with paved road frontage along county roads #22 and #79

Acreage breakdown:

- 500 acres+/- in 17-18 year old planted pines**
- 15 acres+/- in 20 year old planted pines**
- 110 acres+/- in 10 year old planted pines**
- 100 acres+/- in 6 year old planted pines**
- 674 acres+/- in 2 year old planted pines**
- 413 acres+/- to be planted in Jan '18**
- Balance in hardwoods and wildlife food plots**

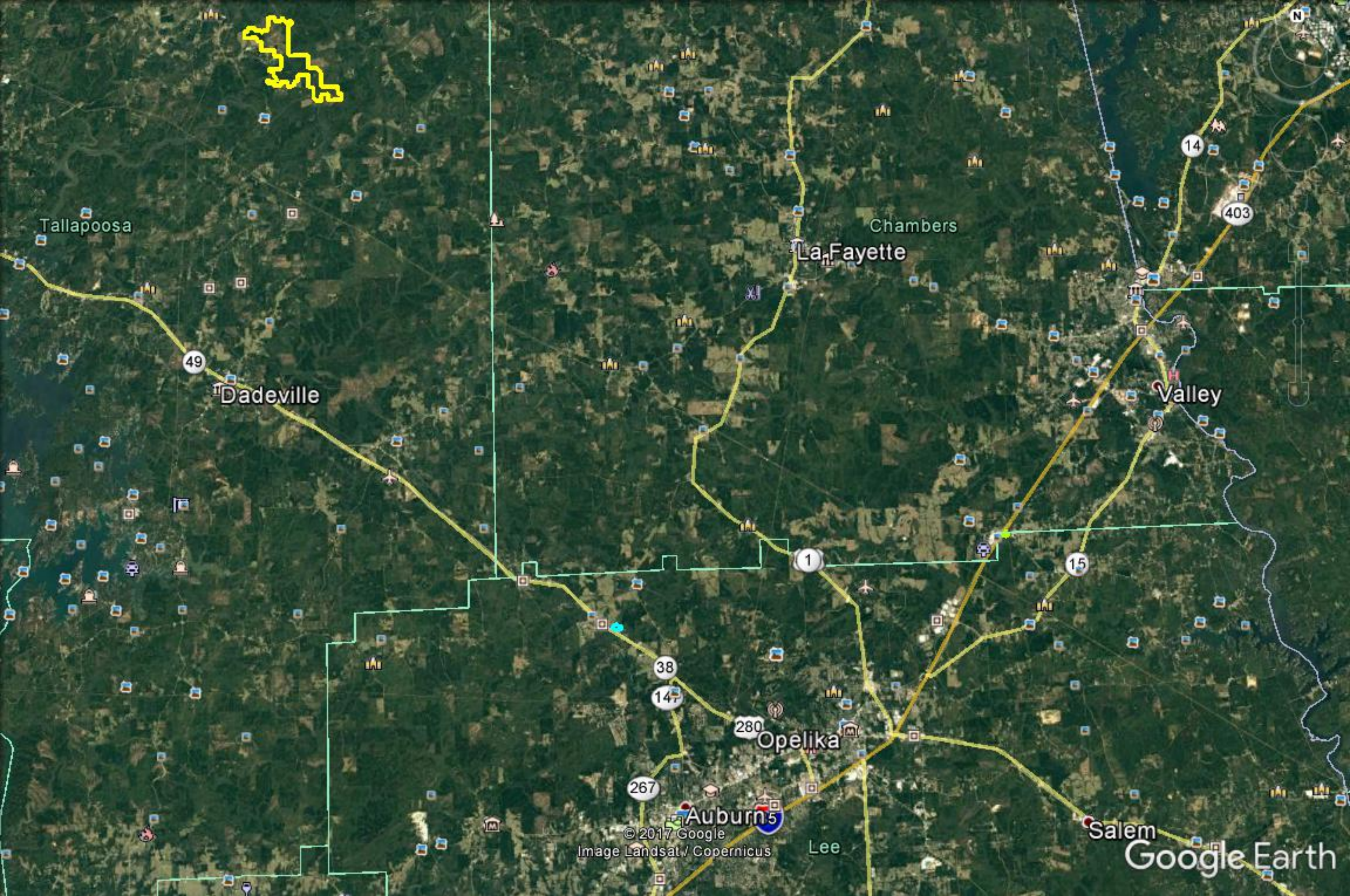
Structures: Very old tenant house used as hunting storage

Wildlife: Good deer and turkey hunting

Water: Has frontage along the beautiful Tallapoosa River and also has numerous creeks that flow through the property.

Comments: Hard to find tracts this size. It is a well managed timber tract with a good interior road system and fire lanes. Can develop it recreationally exactly how you want.

Price: \$1500/acre



Tallapoosa

Dadeville

La Fayette

Chambers

Valley

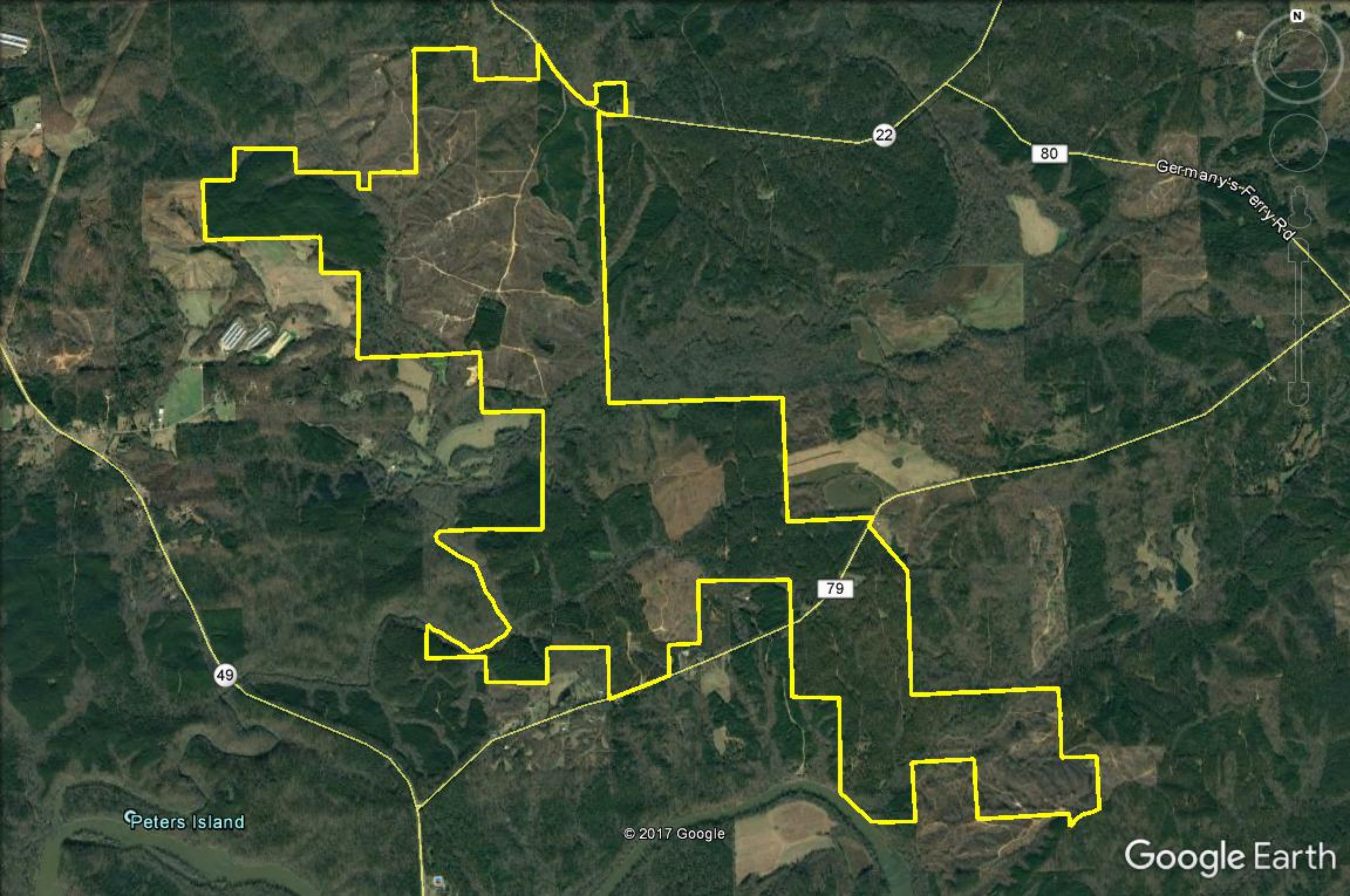
Opelika

Auburn

Salem

© 2017 Google
Image Landsat / Copernicus

Google Earth



49

22

80

Germany's-Ferry-Rd

79

Peters Island

© 2017 Google

Google Earth



Tallapoosa River











