



Specializing in the sale of large properties across the state of Alabama

Chambers County

109 Acres(+/-)

Location: Exit #70 on Interstate 85, has 2,600' of frontage along Chambers County Road #177 and 1,390' of frontage along Chambers Road #79

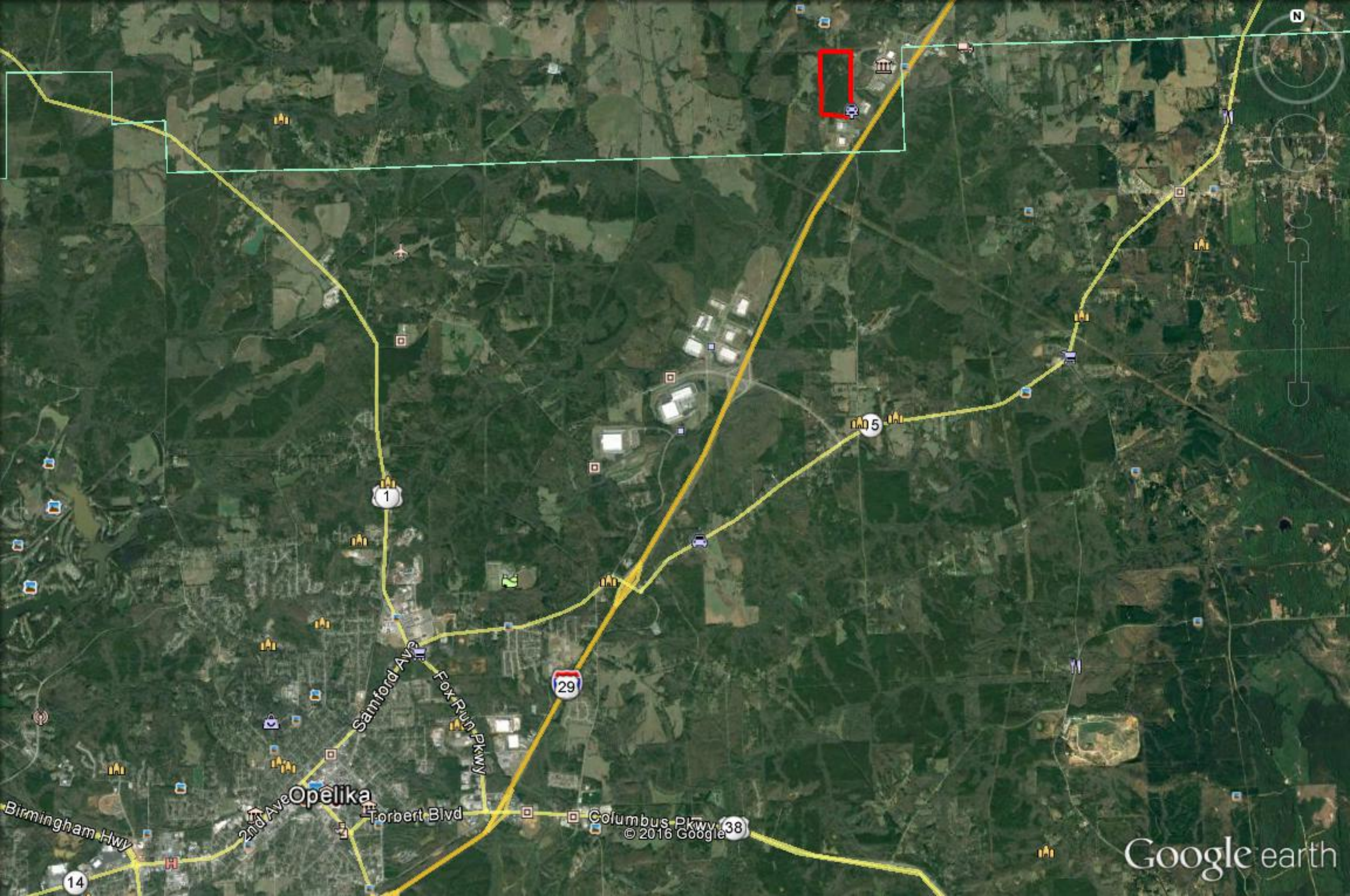
Land: The tract is nearly 100% timbered. It consist of younger planted pines and the topography is relatively flat

Utilities: All utilities are available: Gas-Southeast Alabama Gas; Water-Huguley Water System; Sewer- East Alabama Water and Sewer; Electric- Tallapoosa Electric Co-op; Fiber-Wow Communications

Structures: none

Comments: Ideal industrial site with excellent road frontage and easy access to I-85. It sits in a great location. Seller is willing to divide.

Price: \$25,000/acre



Opelika

Samford Ave

Fox Run Pkwy

29

Columbus Pkwy 38

Torbent Blvd

2nd Ave

Birmingham Hwy

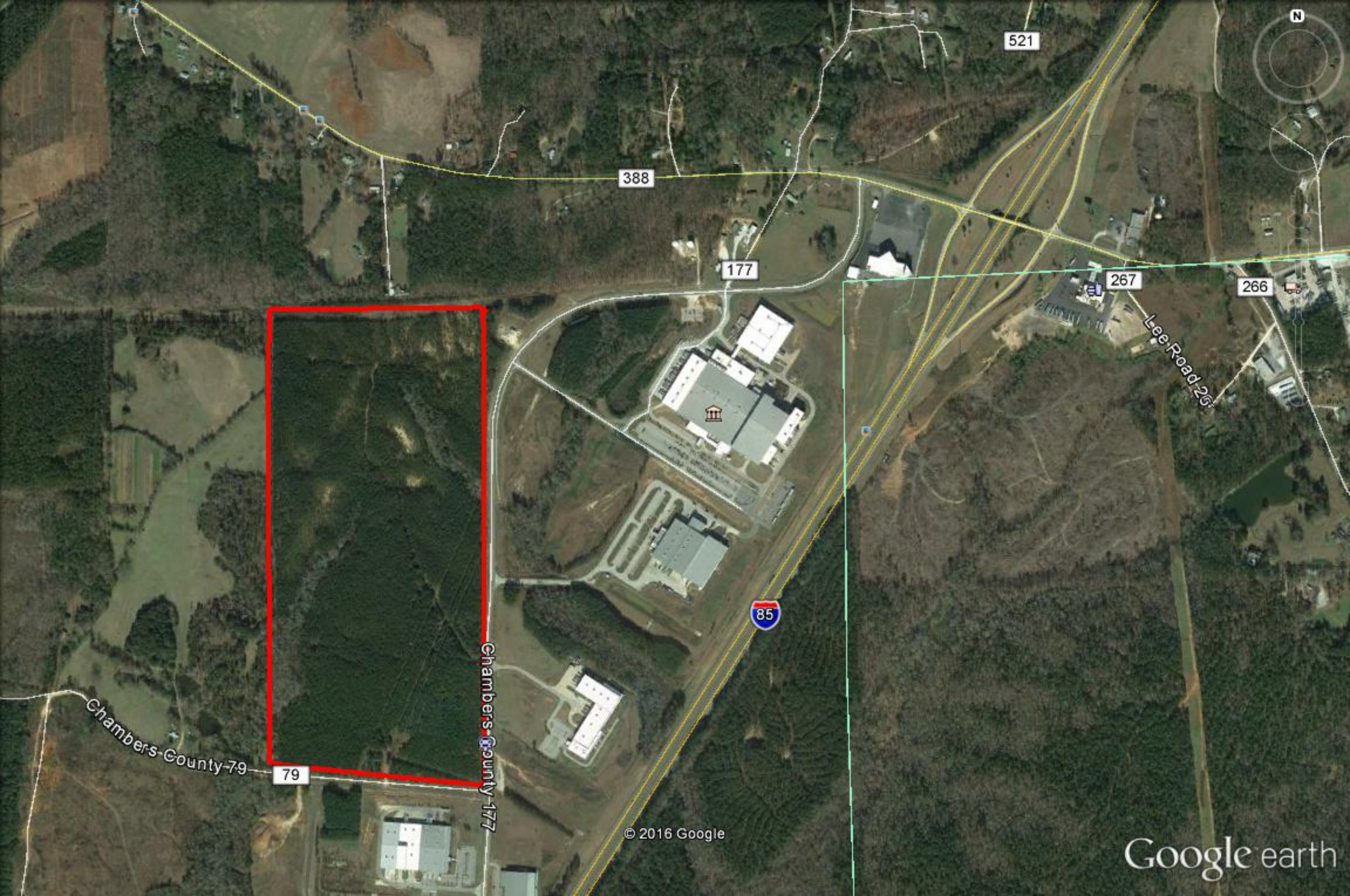
14

1

5

Google earth

© 2016 Google



521

388

177

267

266

Lee Road 265

85

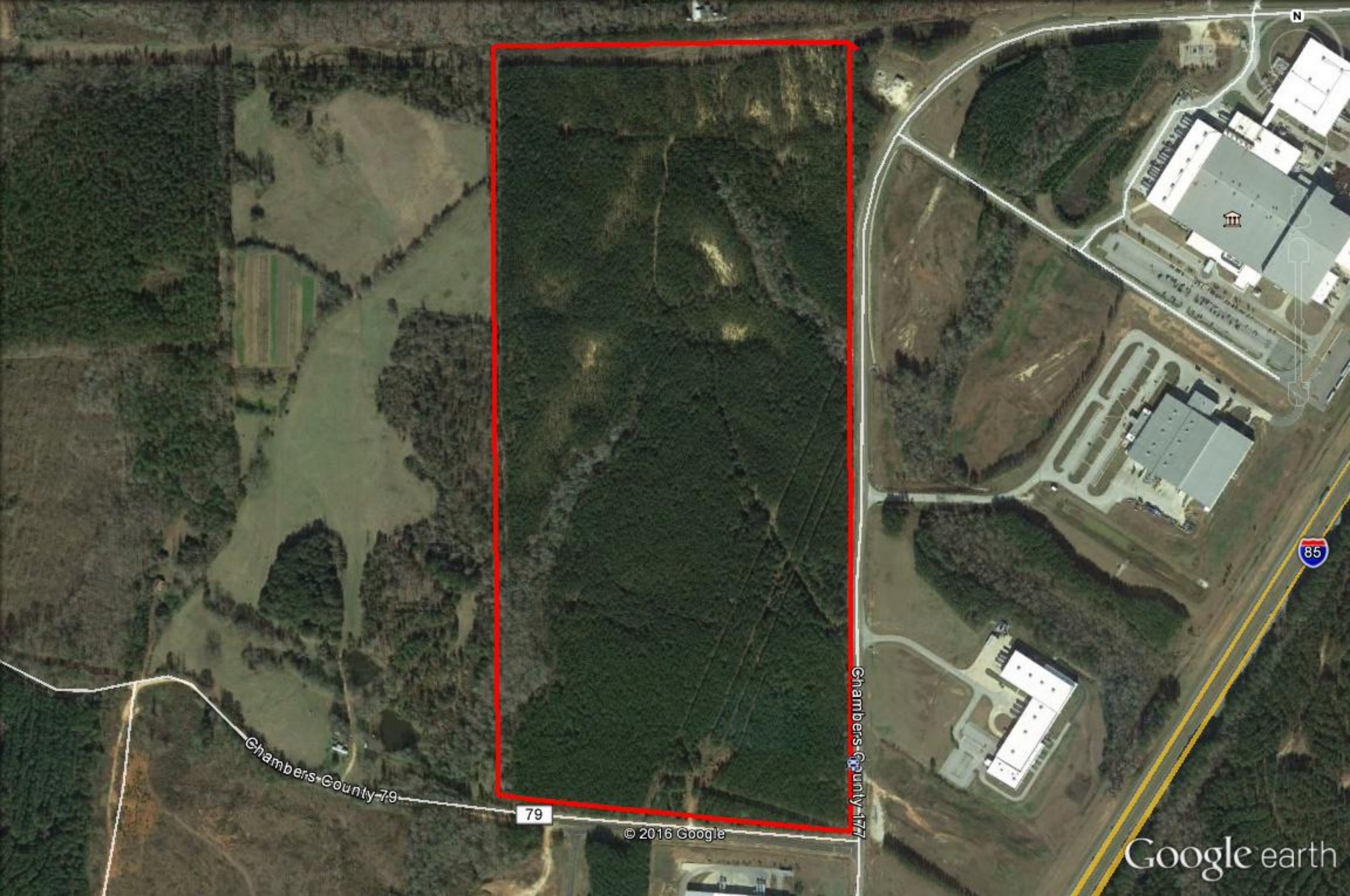
79

Chambers-County-79

Chambers-County-177

© 2016 Google

Google earth



Chambers County 79

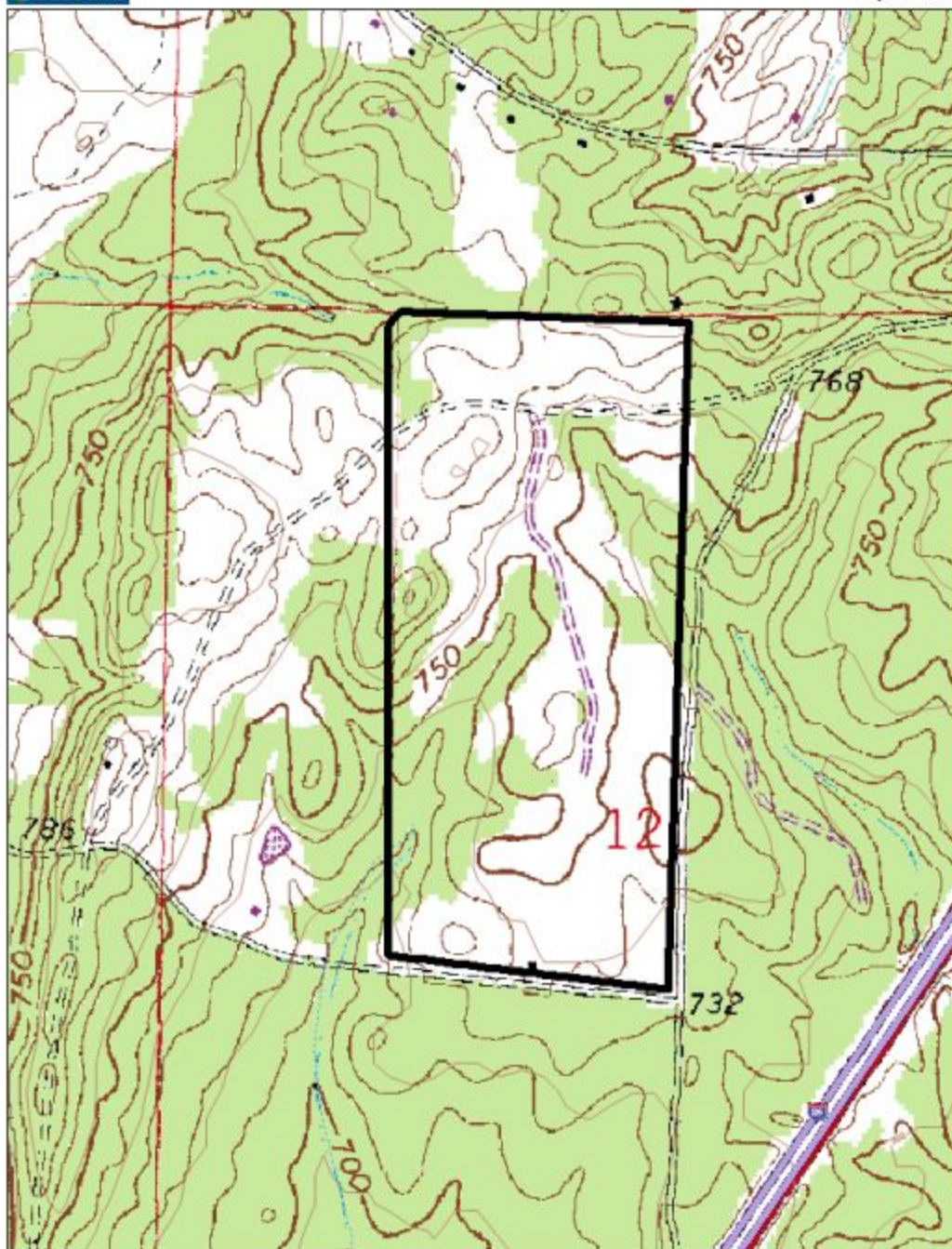
79

Chambers County 177

85

© 2016 Google

Google earth



Data use subject to license.

© DeLorme. Topo USA® 8.

www.delorme.com



Data Zoom 14-6





