



Specializing in the sale of large properties across the state of Alabama

Seven Oaks Plantation

Size: 1400 acres(+/-)

Location: East Central Alabama, short drive from Auburn. It is about 45 minutes from Montgomery, 2 hours from Birmingham.

Land: A diverse piece of property with mature pines, planted pines, hardwood bottoms, and open pasture land. Topography is flat to gently rolling. Has an excellent interior road system.

Wildlife: The hunting is some of the best in the state. Deer and Turkey are abundant in numbers and body weight. There is a 8-foot high game fence around 1050 acres of the farm which only adds to the quality of the game.

Water: Has a 20-acre lake stocked with bass and bream and numerous creeks flowing through the property. There is also three miles of frontage along the beautiful Saugahatchee Creek.

Home: Built in the 1850's, has been remodeled and updated, has 14-foot ceilings, a different crown molding in each room, heart-pine floors downstairs and walnut floors upstairs. It is 4600 sq. ft.+/-, The home overlooks the 20-acre lake. A boathouse and covered bar-b-que area are located at the lake.

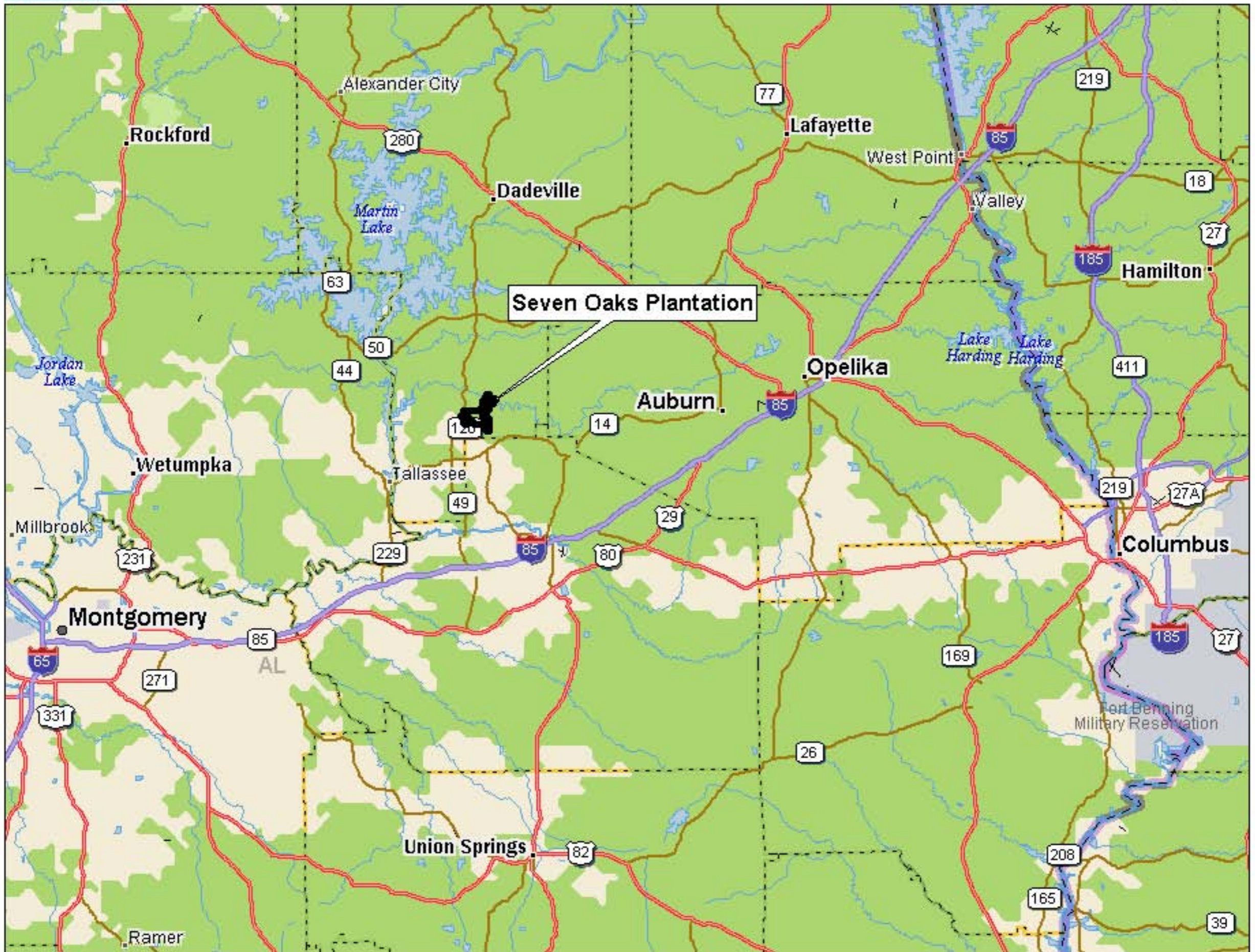
Barn: Has horse stables, area for hay storage, and an apartment. The apartment consists of 3bd, 3ba, a full kitchen and a den and can sleep up to eight people.

Hunting Lodge: Is located on the banks of the Saugahatchee Creek on the northern end of the property. It has 4bd, 2ba, kitchen, and large den. There is also a covered eating area located behind the lodge that can seat a large group.

Access: Has excellent access from a paved road with a gated entrance, but is still remote enough not to be disturbed by neighbors.

Comments: Seven Oaks is a very unique property. It is one of those rare properties that have it all. The location, wildlife, diversity of the land, and the amazing amenities of a completely remodeled 150 year old home, an incredible barn, hunting lodge on Saugahatchee Creek, and a 8-foot high fence around 1050 acres; all add to the splendor of this rare piece of creation.

Price: \$6,000,000



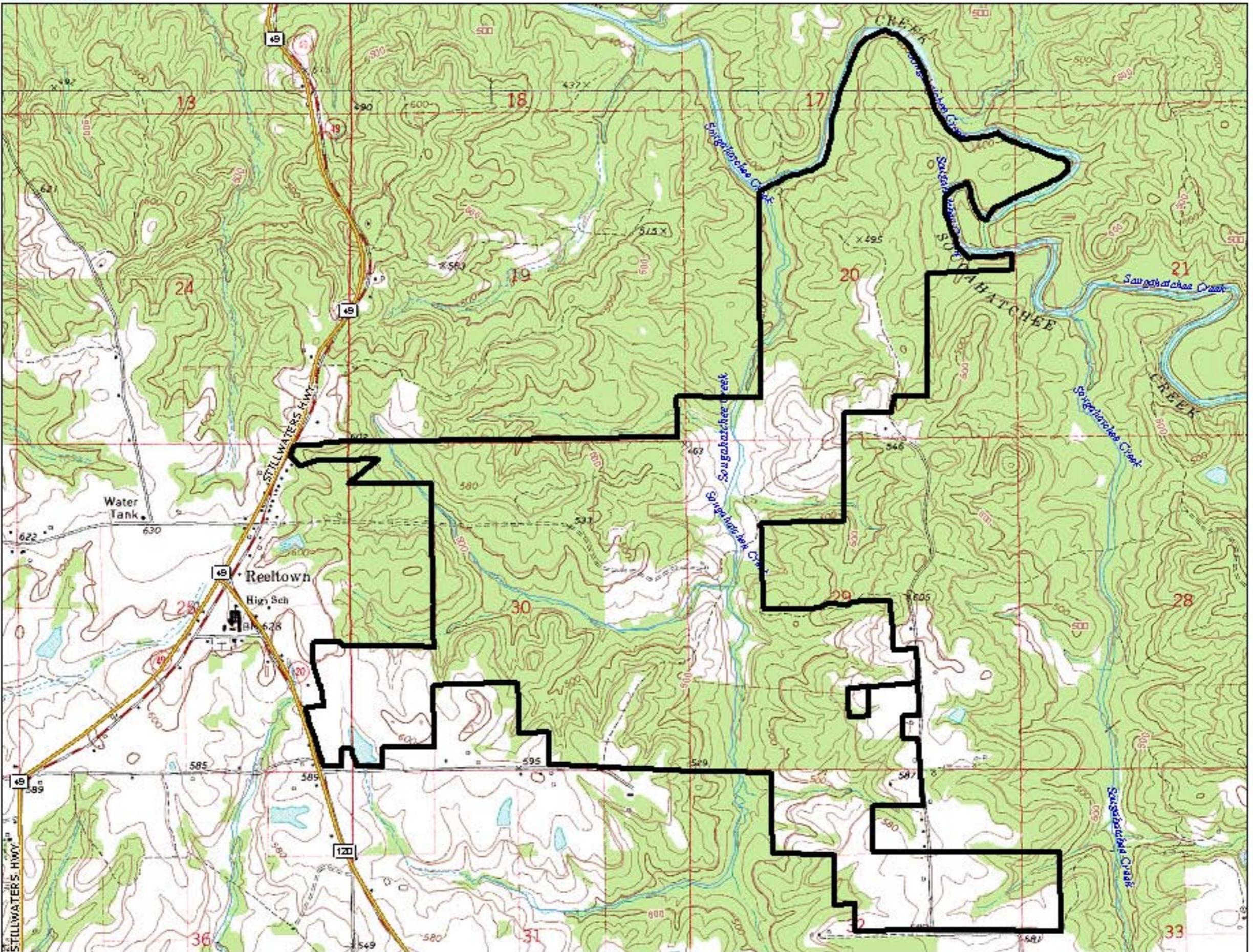
Data use subject to license.

© DeLorme. Topo USA® 8.

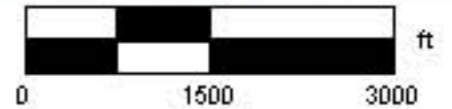
www.delorme.com



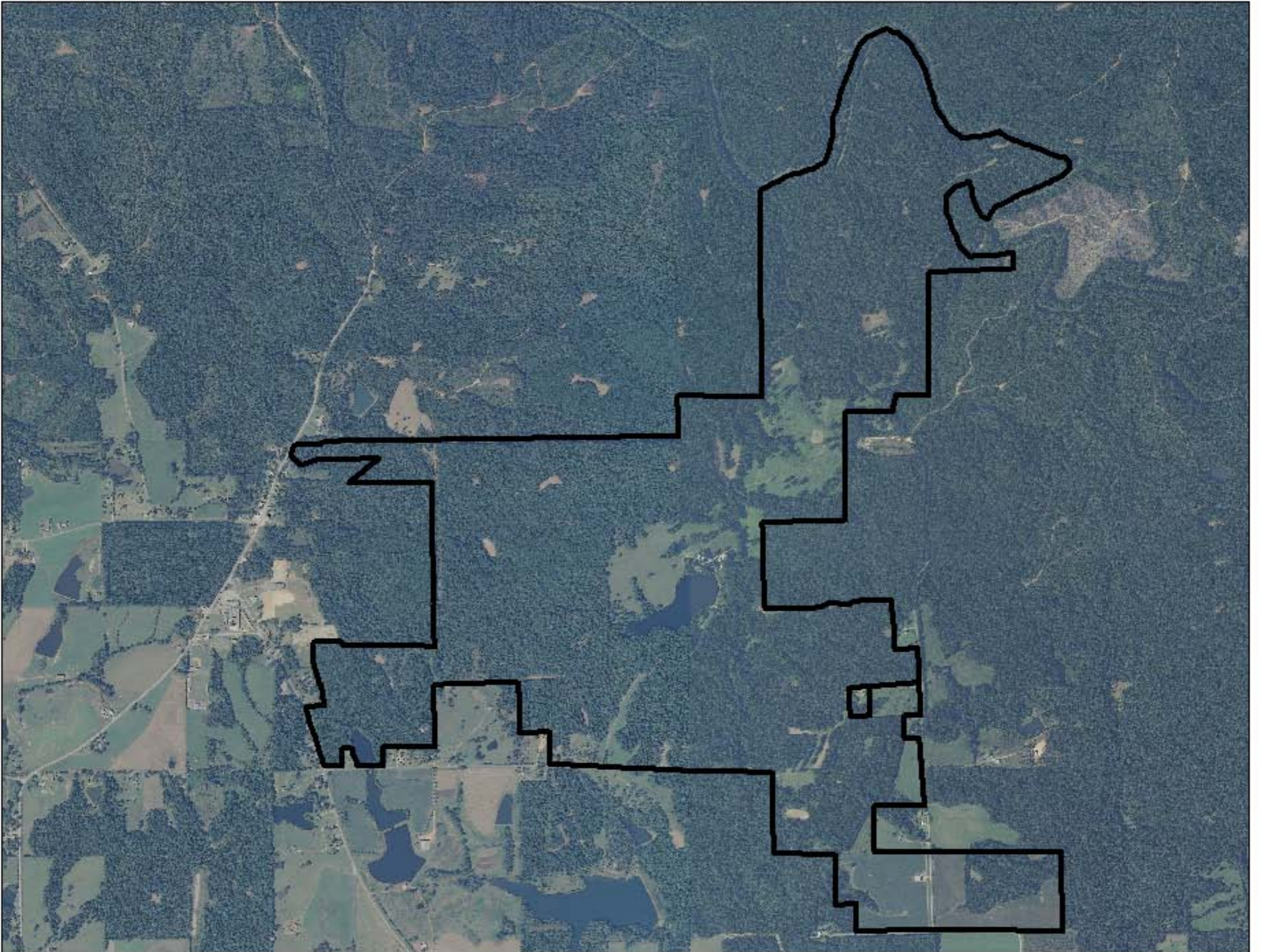
Data Zoom 7-7



Data use subject to license.
© DeLorme. Topo USA® 8.
www.delorme.com



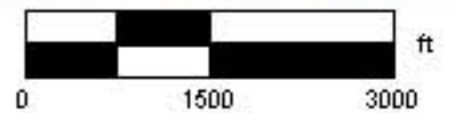
Data Zoom 13-0



Data use subject to license.

© DeLorme. Topo USA® 8.

www.delorme.com



Data Zoom 13-0













8 foot high fence





Hunting lodge



Grilling and seating area behind hunting lodge



Saugahatchee Creek in front of hunting lodge





